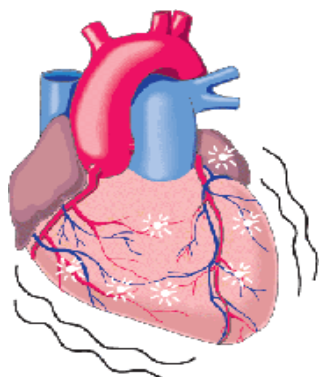


## FACT SHEET: Sudden Cardiac Arrest vs. Heart Attack

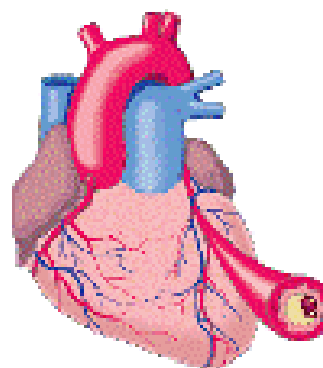
### Same or Different?

#### SUDDEN CARDIAC ARREST



- Sudden Cardiac Arrest (SCA) is a condition that occurs when the heart stops pumping blood. Usually, this is caused by an **electrical problem** in the heart.
- Occasionally, there is a mechanical problem where there may be a normal electrical signal; in turn the heart muscle fails to pump.
- Sometimes SCA is caused by severe hemorrhage and other issues.

#### HEART ATTACK



- A heart attack is caused by a circulation or **plumbing problem of the heart**, when one (or more) of the arteries delivering blood to the heart is blocked. Oxygen in the blood cannot reach the heart muscle, and the heart muscle becomes damaged.
- This damage to the heart muscle can lead to disturbances of the heart's electrical system. A malfunction of the heart's electrical system may cause dangerously fast or slow heart rhythms that can cause SCA.
- Many SCAs occur in patients with coronary heart disease. If the patient suffers a heart attack, there is a higher risk for SCA.

*The Sudden Cardiac Arrest Association's mission is to prevent loss of life from sudden cardiac arrest. We seek to increase awareness, encourage training for immediate bystander action, increase public access to defibrillation and promote the use of available medical devices and therapies, principally, implantable cardioverter defibrillators (ICD). SCAA members are the beneficiaries of improved science and medical technology, coupled with the wisdom and caring of thousands of physicians. For more information, please visit us at [www.suddencardiacarrest.org](http://www.suddencardiacarrest.org)*